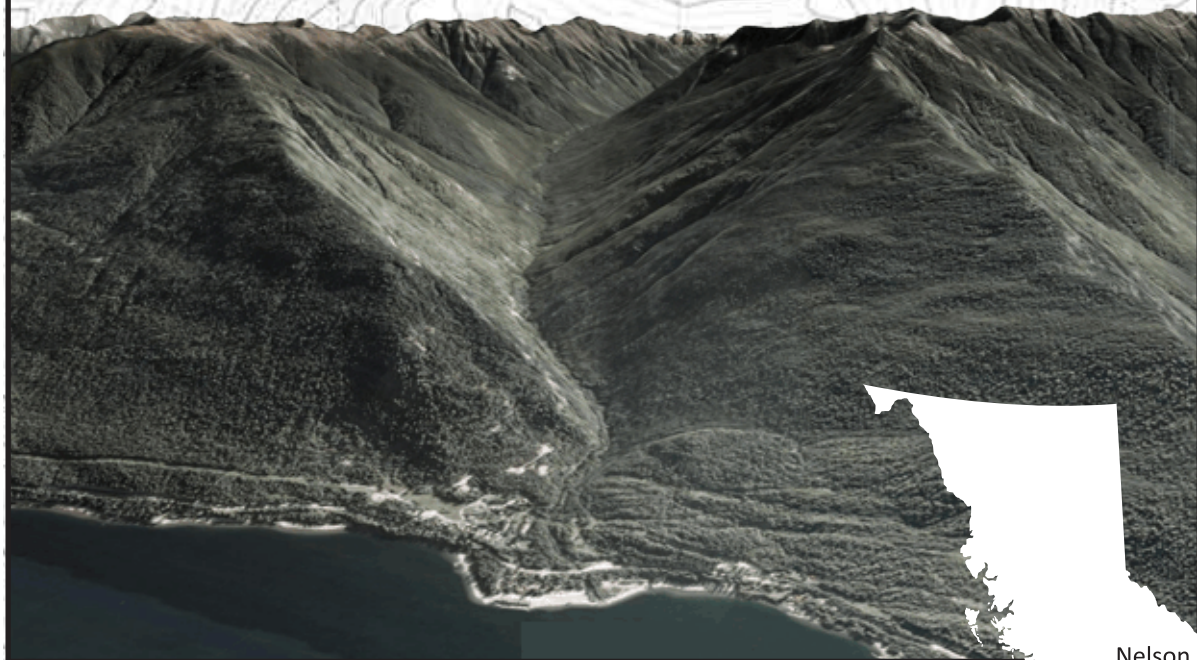


## INDEPENDENT REVIEW OF NATURAL HAZARDS ON THE ALLUVIAL FAN OF LA FRANCE CREEK NEAR NELSON, BC.



Polar Geoscience was retained by Armstrong Engineering & Land Surveying Inc. to conduct a comprehensive aerial photo analysis of the La France Creek fan on the east shore of Kootenay Lake near Nelson, BC. The purpose of the analysis was to identify the potential natural hazards that could affect property development on the alluvial fan. Polar Geoscience also provided senior independent review of a hazard assessment prepared in support of a subdivision proposal.

[www.pgeo.ca](http://www.pgeo.ca)



Nelson